

NGEE

ANN

POLY

de

SCHOOL OF
**DESIGN &
ENVIRONMENT**

- **Design
(Architecture/
Product Innovation)**
Revamped
- **Hotel & Leisure
Facilities
Management** Revamped
- **Real Estate Business**
Revamped

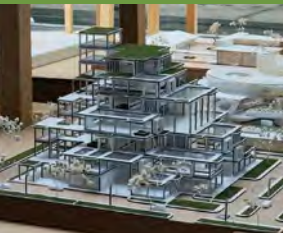
AY 2026



5 Design (N12)
(Architecture/
Product Innovation)
Revamped

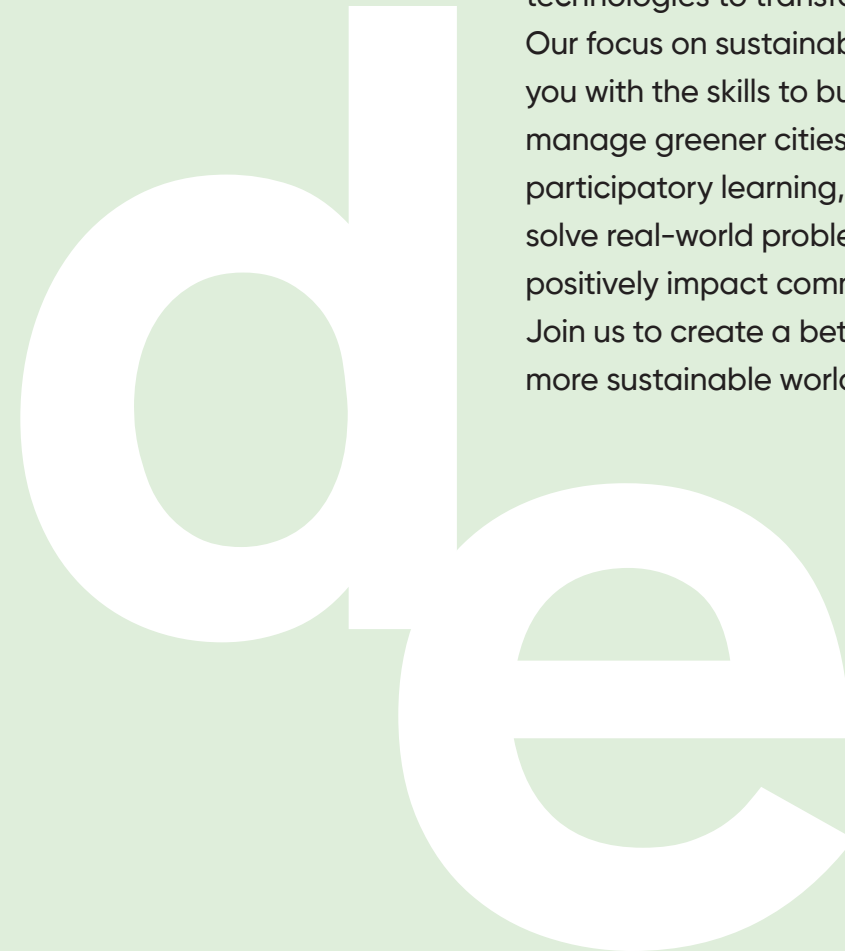
12 Hotel & Leisure
Facilities
Management (N40)
Revamped

18 Real Estate Business
(N48) **Revamped**



Live Design. Live Green.

Design is shaping our future like never before. The choices we make today define the environment we live in tomorrow. At the School of Design & Environment (DE), you'll master human-centred design and smart technologies to transform spaces. Our focus on sustainability equips you with the skills to build and manage greener cities. Through participatory learning, you'll solve real-world problems and positively impact communities. Join us to create a better and more sustainable world by design.



3 Diplomas Endless Possibilities



Design (N12)
(Architecture/Product Innovation)

The only design diploma offering **specialisations in Architecture and Product Innovation**, our top-notch curriculum gives you a strong foundation for a creative career. Be trained in our unique **human-centred design** methodologies, **smart technologies**, and **sustainable design** to widen the impact of your creativity across industries. You can even fast-track to a degree with the **Poly SUTD Scholars Programme!**



Hotel & Leisure Facilities Management (N40)

Our one-of-a-kind hybrid diploma paves the way for exciting careers in **hospitality, business and facilities management**. Gain in-demand **sustainability and digitalisation skills** much valued across industries today. With our strong partnerships with industry leaders, be prepared for varied real-world learning experiences! Embark on your degree while in poly with the **NP-NUS Pathway**.



Real Estate Business (N48)

The only poly diploma of its kind, this course opens doors to many exciting possibilities in the **business** and **real estate** sectors. Explore careers in property management, valuation, marketing, consultancy, real estate investment trusts or real estate development. Acquire skills in **smart and green technologies**, including data analytics for market research and sustainability in real estate through green leases.

Discover more about our DE courses and the unique learning experiences we offer:



Why Choose DE



Technology-Infused Learning

Our technology-infused environment will help you master smart technologies that are transforming our world and shaping the future of design. Here, you will acquire in-demand AI skills and learn how to make data-driven decisions.



Strong Innovation Focus

Dive into the intersection of design, sustainability, and technology with our signature DE Experience (Sustainability) programme. Offered to all DE freshmen, it challenges you to create out-of-the-box solutions for the design and built environment sectors.



Design For Good

Discover a deeper meaning to your course through our human-centred design and participatory design curriculum. Enrich your learning as you apply your skills and knowledge to benefit the community.



Global Exposure

Go on a course-specific Overseas Immersion Programme to hone your skills in an exciting city in China, Thailand, Vietnam or Indonesia! The curated programme will broaden your horizons as you embark on real-world projects or engage with overseas industry experts.

Industry Co-Creation

Co-create ideas with our renowned partners including:



go at DE flex



Shape a learning journey that matches your unique interests with NP's Go FLEX (Flexible Learning EXperience) and get a head start on your further studies and career!



Go BROADER

Personalised Learning Pathway (PLP) Minor

With **12 Minors** and **>50 Learning Units (LUs)**, unlock possibilities by pairing your diploma with one of the following Minors:

- Applied Psychology
- Cybersecurity
- Data Analytics & AI
- Entrepreneurship
- Environmental Sustainability
- Foreign Languages
- Global Readiness
- Robotics & Innovation
- Social Leadership
- Social Media Marketing
- Sustainable Care
- User Experience Design



Go LONGER

One-year Industry Immersion

Partnering top-notch organisations, HLFM lets you build skills and professional networks with our **one-year internship programmes**.



Go MULTIPLE

Multidisciplinary Capstone

Our DES students collaborate with students across NP to work on exciting **real-world projects** in their final year!



Go FURTHER

Passion+ Pathways

Kick-start your entrepreneurial journey or venture into Southeast Asia with confidence through our signature **Global Entrepreneurial Internship Programme** and **Southeast Asia Immersion Leadership Programme**.



Go GLOBAL

Overseas Programmes

Every DE student gets to go on a **Specialised Overseas Immersion Programme!** From cosmopolitan Shanghai to bustling Bangkok, you can look forward to global exposure as part of your course.

Check out the wide range of LUs at www.np.edu.sg/plp



Scan this QR code for more details about **Go FLEX**



Go DIRECT

Further Studies

DES and HLFM students can apply to the **Poly SUTD Scholars Programme** and **NP-NUS Pathway** to fast-track to a degree!



Go DEEPER

Specialisations

With specialisations in **Architecture** and **Product Innovation**, DES students can deepen skills in an area that matches their career aspirations.



Get latest updates on course

N12

Diploma in Design (Architecture/Product Innovation) Revamped

- The only design diploma that offers specialisations in **Architecture** and **Product Innovation**
- Our top-notch curriculum with innovative **Design Studio classes** prepares you for **creative careers** in both design and non-design sectors
- **Gain real-world experience** through exciting internships at local/overseas start-ups or multinationals, industry projects, workshops, competitions and hackathons
- Fast-track to a degree through the **Poly SUTD Scholars Programme** and graduate a year ahead of your peers!

WHAT THE COURSE IS ABOUT

Designers play a key role in addressing today's challenges across architecture, products, experiences, and processes. In the Diploma in Design (DES) – the only poly diploma with specialisations in Architecture and Product Innovation – you will be equipped for creative careers in diverse sectors.

Next-gen Design Skills

Get trained as a next-gen designer with a curriculum infused with the latest technologies and new economy skills such as sustainability, Generative Artificial Intelligence (Gen AI), digital prototyping and visualisation, data analytics, machine learning, and more.

Design for Good

Our unique human-centred design methodology and participatory design modules enable you to impact lives through meaningful community projects. From redesigning public spaces, innovating upcycling, to proposing concepts for sustainable living, you will showcase the benefits of good design to the world!

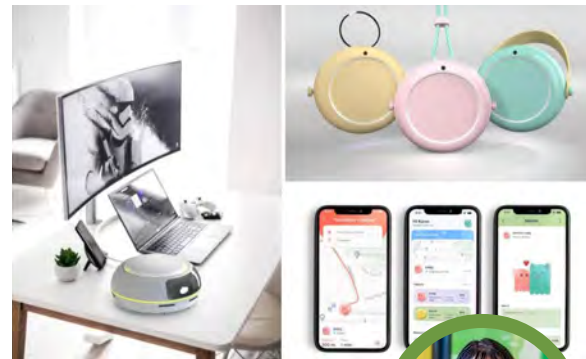
Industry-relevant Learning

Learn from the best-in-class with our strong industry connections that provide real-world learning opportunities. You can look forward to masterclasses, hackathons, industry projects, internships, and more!

You can also start earning relevant industry certifications as a DES student. For instance, our Architecture specialisation students can obtain a Tier 4 (Provisional) Digital Delivery Management Certification from buildingSMART Singapore, a building industry alliance.

Overseas Exposure

From cosmopolitan Shanghai to culturally diverse Medan, go on a Specialised Overseas Immersion Programme to gain global insights as you engage in real-world projects.



IMPROVING LIVES THROUGH DESIGN

Alya Tay, a DesignSingapore Associate and recipient of the DesignSingapore Scholarship in 2023, designed Buddy Bot (left) to make working from home a fun experience, and Naavi (top and bottom right) to help children navigate places independently.

Alya is currently pursuing a Bachelor of Arts (Honours) in User Experience Design at the University of the Arts London.



SPECIALISED OVERSEAS IMMERSION PROGRAMME

28 DES students specialising in Architecture embarked on the first-ever Specialised Overseas Immersion Programme to Medan, Indonesia where they pitched design proposals to the popular Taman Simalem Resort!

For instance, third-year student **Brandon Kuan's** resort concept promotes sustainable tourism by showcasing local culture and traditional businesses while allowing visitors to appreciate and engage with local communities.

Design Your Own Learning

Starting from your second semester in Year 1, you can choose a specialisation that matches your aspiration.

• Architecture

Learn about cutting-edge building technologies, sustainable construction practices, placemaking, the history and theory of architecture, and the integration of Building Information Modelling (BIM) into the design process. Gain insights into how sustainable design intersects with architectural design. Also, explore community-focused participatory design learning, along with hands-on design-build experiences. You will benefit from exposure to professional practices in architecture and real-world design projects.

• Product Innovation

Beyond physical products, design innovation covers digital solutions and service design. Learn about product design and development, understanding user needs, optimising user experiences, and refining user interface designs. Get equipped for the future of design as you explore advanced AI tools and technologies. Plus, build entrepreneurial and digital marketing skills as you work on capstone projects.

To further hone your skills, embark on a 6-month internship at a leading architecture firm, a top design consultancy, a reputable NGO, an established bank, or an innovative start-up.

You can also choose the **Poly SUTD Scholars Programme*** to fast-track your degree at the Singapore University of Technology and Design (SUTD) and graduate up to a year ahead of your peers. Apart from humanities and science modules taught by SUTD faculty and the opportunity to work on cutting-edge research projects, the Pathway sets you on the course to earn a well-regarded degree!

*For selected students.

CELEBRATING YOUNG DESIGNERS

Two DES students secured wins at the AYDA Awards in 2025 under the Interior Design Category. **Edwin Choo** clinched both Best Green Innovation and Bronze Awards while **Vanness Tan** secured Silver. The AYDA Awards is an international competition for young architectural and design students to showcase their talents.



Rail Tales By Edwin Choo



Tapestry Heights By Vanness Tan

Partnerships



OVERVIEW OF YOUR DES JOURNEY



*For selected students.

WHAT YOU WILL LEARN



YEAR 1

- DE Experience (Sustainability)
- Design Foundation Studio
- Design Visualisation & AI
- Digital Modelling & Fabrication
- History & Principles of Design
- Career & Professional Preparation for Design
- Health & Wellness[^]
- Innovation Made Possible[^]
- Confident Communication: Find Your Voice (VOICE)[^]

Architecture Specialisation

- Architectural Design Communication
- Building Information Modelling
- Architectural Tectonics and Technology
- Design Studio 2 (Social Design)

Product Innovation Specialisation

- Advanced Digital Modelling & Rendering
- Design Communication 1
- Design Studio 2 (UI/UX)
- Model Making
- User Interface & Digital Prototyping

YEAR 2

- Career & Professional Preparation 2
- World Issues: A Singapore Perspective[^]

Architecture Specialisation

- Architectural Compliance & Regulations
- Design Studio 3 (Community Design/Build)
- Design Studio 4 (Sustainable Technologies)
- Design Simulation & Performance Modelling
- Green Building Technology & System
- Parametric & Computational Design
- Smart & Sustainable Urban System

Product Innovation Specialisation

- Advanced Rendering & Animation
- Design Communication 2
- Design Development & Sustainable Innovation
- Design Studio 3 (Service Design)
- Design Studio 4 (Design Entrepreneurship)
- Entrepreneurship & Digital Marketing
- User-Centric Design

YEAR 3

- Project ID: Connecting the Dots[^]

Architecture Specialisation

- Architectural Practice
- Design Studio 5 (Placemaking & Biophilic Design)
- Six-month Internship OR Six-month Final-Year Project^{^*}

Product Innovation Specialisation

- Capstone Project
- Technology & AI for Design
- Six-month Internship OR Six-month Final-Year Project^{^*}

[^] Critical Core modules account for 13 credit units of the diploma curriculum. They include modules in communication, innovation and world issues, as well as an interdisciplinary project. By bringing students from diverse diplomas together, the interdisciplinary project fosters collaboration to explore and propose solutions for real-world problems. NP aims to develop students to be agile and self-directed learners, ready for the future workplace.

^{^*} For selected students.

To keep our curriculum current and robust, diploma modules are subject to change over the three years. Please visit our website for latest updates.

FURTHER STUDIES

As a DES graduate, you can further your education in relevant degree courses at both local and overseas universities:

With our latest Board of Architects Singapore accreditation, graduates from the Architecture Specialisation may be granted up to two years advanced standing. You must still complete at least three years of full-time, on-campus architectural studies – including the final year of the Bachelor of Arts (Architecture) – to meet the Board's requirements for registration.

Singapore

- Nanyang Technological University
 - Bachelor of Fine Arts in Design Art
- National University of Singapore
 - Bachelor of Arts in Architecture
 - Bachelor of Arts in Industrial Design
- Singapore University of Technology and Design
 - Bachelor of Science (Architecture and Sustainable Design)
 - Bachelor of Science in Design and Artificial Intelligence
- LASALLE College of the Arts
 - Bachelor of Arts (Design Communication)
 - Bachelor of Arts (Interior Design)
 - Bachelor of Arts (Product Design)
- Nanyang Academy of Fine Arts
 - Bachelor of Arts (Hons) Design Practice

Australia

- The University of Melbourne
 - Bachelor of Design (Architecture Major)
 - Bachelor of Design (User Experience Design Major)
- RMIT University
 - Bachelor of Architectural Design
- University of Canberra
 - Bachelor of Design (Industrial Design)
- Swinburne University of Technology
 - Bachelor of Design (Interior Architecture) (Honours)
 - Bachelor of Bachelor of Design (Industrial Design) (Honours)



DESIGNING PROFESSIONAL SERVICE BOTS

In partnership with Schaeffler, final-year DES (Product Innovation) students participated in a 15-week real-world design project focused on creating a professional service bot. Students were mentored by experts at Schaeffler's research hub.



Muhd Zikri bin Hajhari

Class of 2023

Pursuing a Bachelor of Science (Architecture and Sustainable Design) degree at SUTD under the Global Distinguished Scholarship



Lim Cai Qian

Class of 2023

The recipient of the Lee Kuan Yew Award is pursuing a Bachelor of Integrative Studies (Human-Centred Futures Design) at SMU under the Global Impact Scholarship



Ang Kai Jun

Class of 2023

The recipient of the DCA Architects Prize and Asia Young Designer Award 2022 for Best Green Innovation is pursuing a Bachelor of Arts (Architecture)(Honours) at NUS



Ng Chi Yuen

Class of 2024

The recipient of the Lien Ying Chow Scholarship is pursuing a Bachelor of Fine Arts in Art, Design and Media at NTU

CAREER

With design-related career opportunities set to grow in the future, DES graduates can look forward to exciting roles in both design and non-design sectors.

Architecture

- Architectural Associate/Drafter/Executive
- Architecture Technical Officer
- BIM Modeller
- Exhibition Designer/Spatial Designer
- Interior Architecture Designer
- Planning Executive
- Project Management Executive
- Retail Designer
- Technical Sales Executive
- Visual Merchandising Designer

Product Innovation

- Design Consultant
- Design Entrepreneur
- Exhibition Designer/Spatial Designer
- Engineering/Innovation Designer
- Furniture Designer
- Product/Industrial Designer
- Packaging Designer
- Service Designer
- UI/UX Designer
- Visual Communication Designer

AWARD-WINNING PROJECT

The PAWA knee guard designed by **Yap Shu Min** won the gold award in the 2023 Assistive Rehabilitation Technologies Student Innovation Challenge.

The smart knee guard offers targeted pain relief through electronic pulsations at acupuncture points and comes with an app for guided therapy exercise.



Gavin Low

Class of 2012

He graduated top of the cohort with a Master of Architecture from NUS. The recipient of the Lee Kuan Yew Gold Medal and AUA President's Award is currently an Architectural Associate at Forum Architects.



Russell Chew

Class of 2011

The NUS Bachelor of Arts (Honours) Industrial Design graduate is currently a Design Lead at Monetary Authority of Singapore.



Ryan Quah

Class of 2017

He graduated top of the cohort with a Master of Architecture from NUS. The Lee Kuan Yew Gold Medal awardee and BCA iBuildSG scholar is currently an Architectural Associate at DP Architects.

Entry Requirements

Aggregate Type ELR2B2-D

To be eligible for consideration, candidates must have the following GCE 'O' Level examination (or equivalent) results.

Subject	'O' level Grade
English Language	1-7
Additional Mathematics/Mathematics	1-7
Any one of the 2nd group of Relevant Subjects for the ELR2B2-D Aggregate Type	1-6

Applicants must also fulfil the aggregate computation requirements for the ELR2B2-D Aggregate Type (English Language, 2 relevant subjects and 2 other best subjects) listed at www.np.edu.sg/docs/ELR2B2.pdf.

For students with other qualifications, please refer to the NP website for the entry requirements and admissions exercise period.

Candidates with severe vision deficiency may encounter difficulties meeting the course requirements and expectations.

CONTACT US

For the most up-to-date information on NP's Diploma in Design, log on to www.np.edu.sg/des



Get latest updates on course



N40

Diploma in Hotel & Leisure Facilities Management Revamped

- Seize **multiple growth opportunities** with our **unique hybrid diploma** that focuses on **hospitality, business & facilities management** plus emerging skills in **sustainability & digitalisation**!
- **Strong partnerships with industry leaders** and international institutions open exciting real-world and overseas learning experiences
- **Jumpstart your degree** with the **NP-NUS Pathway** and earn credits towards your NUS degree while still in poly
- **Customise your learning** with a choice of a six-month internship or one-year Industry Immersion Programme

WHAT THE COURSE IS ABOUT

A unique hybrid diploma that focuses on hospitality, business and facilities management, the Diploma in Hotel & Leisure Facilities Management (HLFM) enables you to seize multiple growth opportunities! With industries adopting smart and green technologies, HLFM will train you in emerging skills in sustainability and digitalisation to give you an added edge.

Gain In-demand Skills

HLFM will equip you with digitalisation skills such as data analytics, Artificial Intelligence-driven research and digital marketing, along with consumer psychology, to address real-world challenges. Learn smart technologies including Building Information Modelling (BIM), microbit coding, and Internet of Things (IoT). You will also be trained to manage facilities such as shopping malls and integrated resorts.

Industry-relevant Learning

Look forward to learning journeys, off-campus workshops, and the opportunity to choose between a six-month internship or a one-year industry immersion programme locally or overseas with organisations such as Marriott Beijing and Hong Kong Disneyland!

These experiences will develop your skills in front- and back-office management, hospitality business operations, as well as sustainable and business continuity practices.

Cutting-edge Facilities with Real Data

Want to get hands-on experience working with real-life data? Our on-campus smart Integrated Operations Centre will become your classroom where you learn how to solve real-world challenges through authentic experiences and put your facilities management skills to the test.

GAINING NEW PERSPECTIVES

"The NP-NUS Pathway was an eye-opening experience. I dove into topics like project management law and advanced Building Information Modelling (BIM). The in-depth insights combined modelling with theory in a way that clicked! All the pieces came together and gave me a whole new perspective on facilities management."

Ho Min Xuan

Third-year HLFM student pursuing the NP-NUS Pathway



Accelerate Your Degree Studies

Looking to get a taste of university life while still in poly? Jumpstart your journey towards NUS' Infrastructure Project Management (IPM) degree with the NP-NUS Pathway[^], which lets you fast-track your studies and graduate sooner.

Professional Certifications

Get fully prepared for the workforce with relevant certifications such as Autodesk BIM, Salesforce AgentBlazer Champion, Fire Safety Manager* and bizSAFE Level 2. These internationally-recognised qualifications will give you a head start when you join the industry.

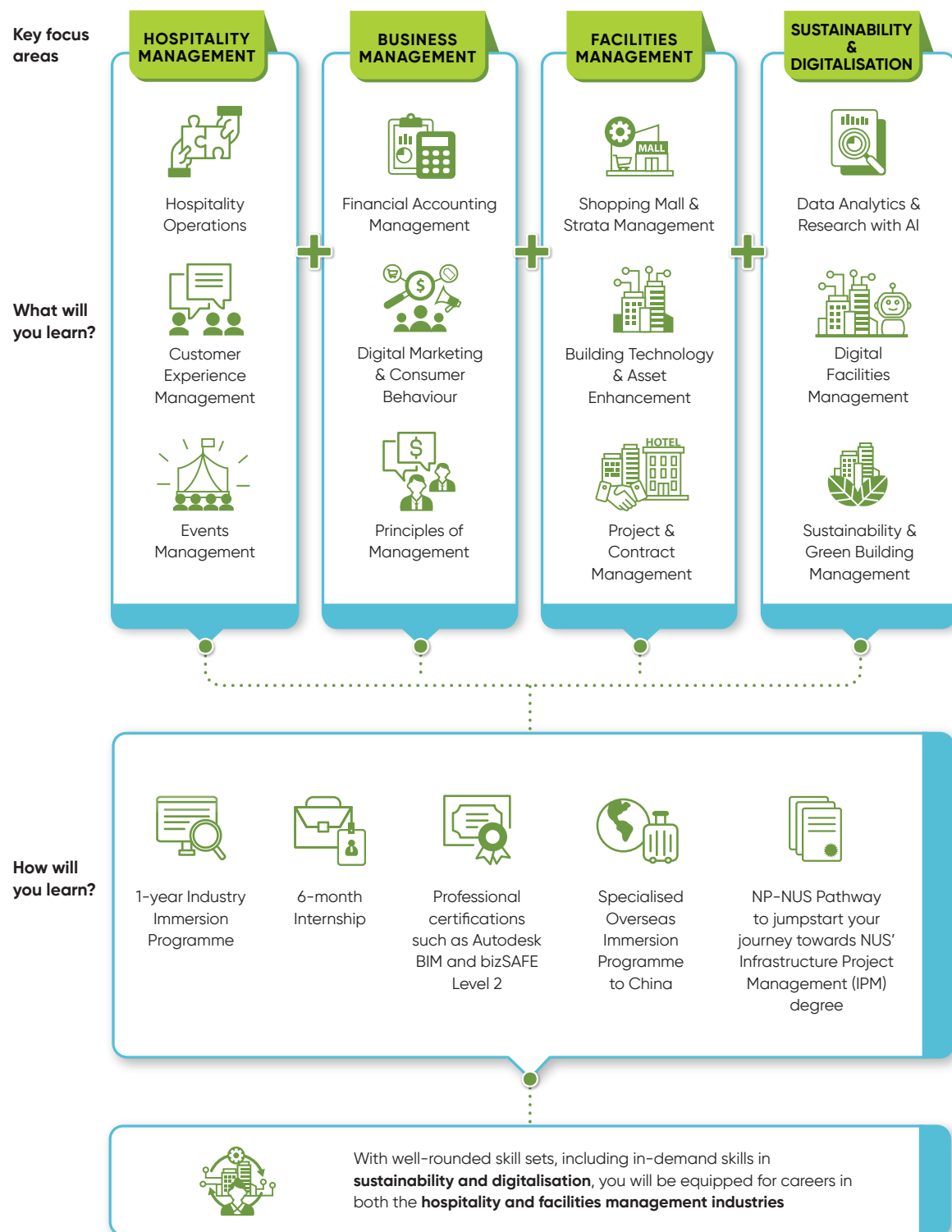
[^]For selected students.

*Subject to fulfillment of all requirements.

Partnerships



OVERVIEW OF YOUR HLFM JOURNEY



WHAT YOU WILL LEARN

YEAR 1

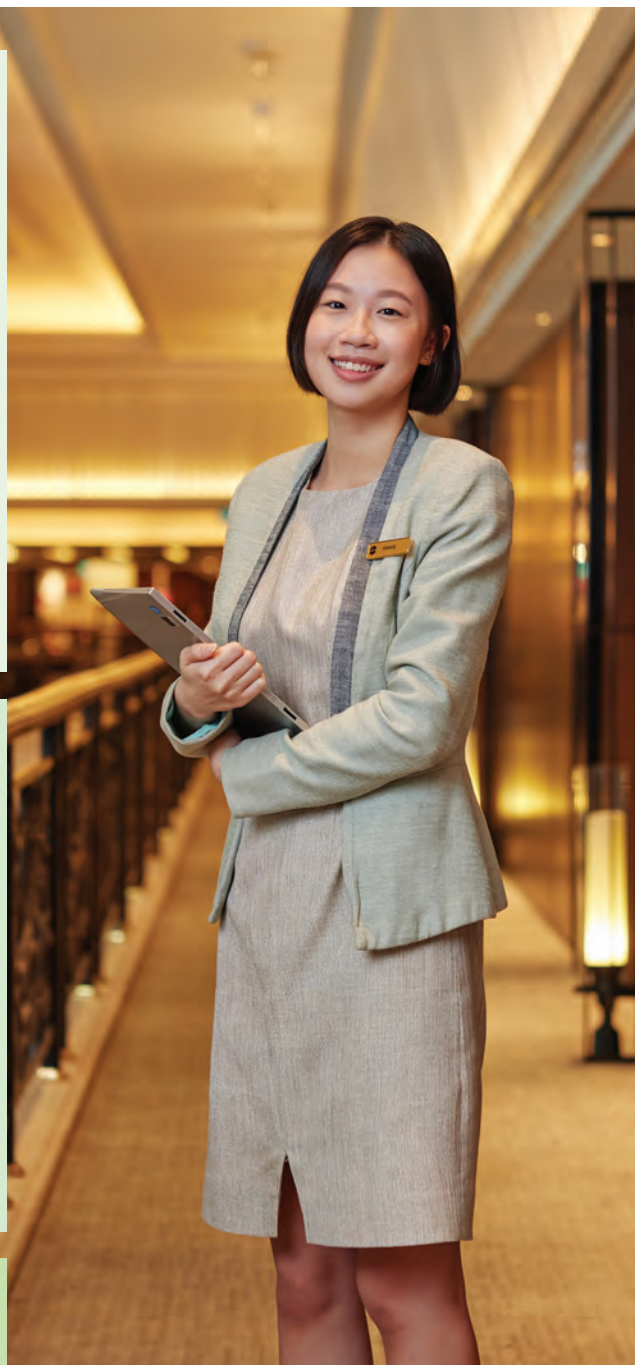
- Building Technology & Asset Enhancement
- Customer Experience Management
- Data Analytics and Research with AI
- DE Experience (Sustainability)
- Electrical Facilities
- Environment Health and Workplace Safety
- Financial Accounting and Management
- Hospitality Operation
- Mechanical Facilities
- Career and Professional Preparation 1
- Innovation Made Possible[^]
- Health & Wellness[^]
- Confident Communication: Find Your Voice (VOICE)[^]

YEAR 2

- Building Information Modelling
- Digital Facilities Management
- Digital Marketing and Consumer Behaviour
- Events Management
- Hospitality Management
- Security Management & Business Continuity
- Shopping Mall & Strata Management
- Sustainability and Green Building Management
- Career and Professional Preparation 2
- World Issues: A Singapore Perspective[^]

YEAR 3

- Fire Safety Management
- Hospitality Business
- Project & Contract Management
- Principles of Management
- Six-month Internship OR One-year Industry Immersion Programme
- Project ID: Connecting the Dots[^]



[^] Critical Core modules account for 13 credit units of the diploma curriculum. They include modules in communication, innovation and world issues, as well as an interdisciplinary project. By bringing students from diverse diplomas together, the interdisciplinary project fosters collaboration to explore and propose solutions for real-world problems. NP aims to develop students to be agile and self-directed learners, ready for the future workplace.

To keep our curriculum current and robust, diploma modules are subject to change over the three years. Please visit our website for latest updates.

FURTHER STUDIES

With a well-recognised diploma under your belt, you can continue your education in both local and overseas universities. HLFM graduates who apply to study in the following related degree courses can look forward to credit exemptions.

Singapore

- National University of Singapore
 - Bachelor of Engineering (Infrastructure and Project Management)
 - Bachelor of Business Administration (Real Estate)
- Singapore Institute of Technology
 - Bachelor of Hospitality Business
 - Bachelor of Engineering in Sustainable Infrastructure Engineering (Building Services)
- Singapore University of Social Sciences
 - Bachelor of Science (Facilities Management)
 - Bachelor of Science (Events Management)

Australia

- University of Melbourne
 - Bachelor of Design
- University of New South Wales
 - Bachelor of Construction Management and Property

United States

- University of Nevada, Las Vegas
 - Bachelor of Science in Hospitality Management

Switzerland

- Roches International School of Hotel Management
 - Bachelor's Degree in Global Hospitality Management
- Glion Institute of Higher Education
 - Bachelor's Degree in International Hospitality Business



Chye Yi De
Class of 2021

The recipient of the SAF Academic Scholarship is pursuing a Bachelor of Engineering (Infrastructure and Project Management) at NUS



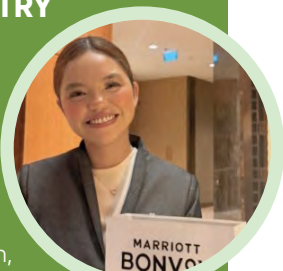
Michelle Tan
Class of 2025

Pursuing a Bachelor of Business in Hospitality and Tourism Management at SIT

DEEPENING INDUSTRY EXPOSURE

"With my interest in the hotel industry, the one-year industry immersion programme perfect was for me. The course prepared me well for my role as a Front Office Intern, and I was already familiar with the digital systems for check-ins and payments. Having a longer internship gave me the opportunity to take on more responsibilities and develop a fuller understanding of hotel operations."

Alysha Jasleen Abdul Jamil
Final-year student and Front Office intern at Marriott Tangs Plaza Singapore



SPECIALISED OVERSEAS IMMERSION PROGRAMME

As part of their Specialised Overseas Immersion Programme, second-year HLFM students visited the MTower by Mapletree China and one of Asia's largest malls, Wushang DREAM Plaza, to gain insights into facilities management in fast-developing cities like Wuhan.

CAREER

As an HLFM graduate, your training in hospitality, business and facilities management, plus the exposure you gain from our dual focus in smart and green technologies will give you a head start in the future workplace. You can look forward to a wide range of careers such as:

Hospitality Management

- Front Office
- Guest Relations
- Reservations

Business Management

- Business Development
- Events Operation
- Sales & Marketing

Facilities Management

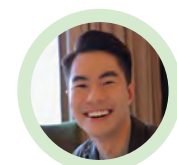
- Environmental Management
- Property Management
- Smart Facilities Management Coordination

You will also be eligible to apply for the SkillsFuture Work-Study Programme (WSProg) in the hospitality and facilities management sector, including the Specialist Diploma in Sustainable Facilities Management at NP.



Chua Weilin
Class of 2017

Manager under the Facilities Management East Division at JTC Corporation



Roy Tan
Class of 2018

Grand Club Assistant Manager at Grand Hyatt Singapore



Ronald Yap
Class of 2018

Assistant Front Office Manager at Hilton Singapore Orchard

Entry Requirements

Aggregate Type ELR2B2-C

To be eligible for consideration, candidates must have the following GCE 'O' Level examination (or equivalent) results.

Subject	'O' level Grade
English Language	1-7
Additional Mathematics/Mathematics	1-6
Any one of the following subjects:	1-6
Biology	
Biotechnology	
Chemistry	
Computing/Computer Studies	
Design & Technology	
Electronics/Fundamentals of Electronics	
Physics	
Science (Chemistry, Biology)	
Science (Physics, Biology)	
Science (Physics, Chemistry)	

Applicants must also fulfil the aggregate computation requirements for the ELR2B2-C Aggregate Type (English Language, 2 relevant subjects and 2 other best subjects) listed at www.np.edu.sg/docs/ELR2B2.pdf.

For students with other qualifications, please refer to the NP website for the entry requirements and admission exercise period.

Candidates who have completed the Higher NITEC in Facility Management and issued with the Fire Safety Manager Certificate will be exempted from the Fire Safety Management module in this diploma.

Candidate with severe vision deficiency or hearing deficiency may encounter difficulties meeting the course requirements and expectations.

CONTACT US

For the most up-to-date information on NP's Diploma in Hotel & Leisure Facilities Management, log on to www.np.edu.sg/hlfm



Get latest updates on course



N48

Diploma in Real Estate Business Revamped

- The only business diploma with a focus on real estate that trains you in **property valuation, investment & management and urban planning**
- Be equipped with additional skill sets in **business management, smart technology and sustainability** to widen your degree pathways and career options
- **Learn from industry experts** such as Knight Frank and Mapletree through masterclasses, workshops and industry projects
- Gain highly sought-after **professional certifications** to kick-start your career!

WHAT THE COURSE IS ABOUT

If you have an interest in real estate and business management, this course is right up your alley! The Diploma in Real Estate Business (REB) equips you with industry-relevant skills in asset management and valuation, land planning and redevelopment, as well as other future-ready competencies.

The only poly diploma of its kind, our unique curriculum opens doors to many exciting possibilities in business and real estate – you can even contribute to shaping future cities!

Business + Smart Tech + Sustainability

You will build a strong foundation in business fundamentals while honing a wide range of in-demand skills. You will also develop your expertise in smart technology, including knowledge of smart building systems, data analytics and Artificial Intelligence (AI).

With the growth in online platforms for property marketing, learn the latest digital marketing strategies and virtual tools for effective online engagement.

Reputable Industry Partners

Our partnerships with industry leaders, such as Knight Frank and Mapletree, offer you practical experience in facilities and mall management.

You may even work on community impact projects. For instance, in the MyNiceHome collaboration with HDB, our students used their skills to help flat buyers plan their finances.

Extensive Career Opportunities

REB will open doors to careers in property valuation and development, as well as marketing and management of commercial, industrial and residential properties. You can also explore opportunities in urban planning and investment, helping property developers and investors maximise their profits.

With your knowledge of smart and sustainable building practices, you will be well prepared for jobs in the green economy.

Diverse Real-World Experience

Work on research collaboration projects with established partners such as ERA and stand to earn additional professional certifications such as Autodesk BIM, Fire Safety Manager* and bizSAFE. Take on a six-month internship or three-month internship with a Final-Year Project and gain industry experience while undertaking a research project.



Overseas Exposure

Go on Specialised Overseas Immersion Programmes to cities including Wuhan, China and gain valuable global and industry perspectives! REB students will get to adapt and apply classroom knowledge to real-world contexts abroad as they undertake module assignments based on the host country's real estate practices.

You can also look forward to visits to the local city's planning authority and national museums, as well as real estate developers, housing project showflats and more!

*Subject to fulfillment of all requirements.

Partnerships

CBRE



Knight Frank

mapletree

ULI Singapore

Singapore Institute of Surveyors and Valuers

OVERVIEW OF YOUR REB JOURNEY



WHAT YOU WILL LEARN



YEAR 1

- Data Analytics & AI for Real Estate Research
- DE Experience (Sustainability)
- Real Estate Marketing 1
- Introduction to Real Estate & Sustainability
- Sustainable Building Technologies
- Environmental Services & Workplace Safety
- Economics
- Financial Accounting & Management
- Principles of Law
- Career & Professional Preparation 1
- Confident Communication: Find Your Voice (VOICE)^
- Health & Wellness^
- Innovation Made Possible^

YEAR 2

- Real Estate Law
- Real Estate Marketing 2
- Property Management
- Property Valuation
- Urban Planning & Sustainability
- Building Services & Maintenance
- Client Relationship Management
- Project Management & Contract Administration
- Career & Professional Preparation 2
- World Issues: A Singapore Perspective^

YEAR 3

- Real Estate Investment & Finance
- Building Diagnostics & Asset Enhancement
- Fire Safety Management
- Global Business & Entrepreneurship
- Six-month Internship OR Three-month Internship and Final-Year Project
- Project ID: Connecting the Dots^

^ Critical Core modules account for 13 credit units of the diploma curriculum. They include modules in communication, innovation and world issues, as well as an interdisciplinary project. By bringing students from diverse diplomas together, the interdisciplinary project fosters collaboration to explore and propose solutions for real-world problems. NP aims to develop students to be agile and self-directed learners, ready for the future workplace.

To keep our curriculum current and robust, diploma modules are subject to change over the three years. Please visit our website for latest updates.

FURTHER STUDIES

As an REB graduate, you may be given credit exemptions or advanced standing when you apply to study in related degree courses such as:

Singapore

- National University of Singapore
 - Bachelor of Business Administration (Real Estate)
 - Bachelor of Engineering (Infrastructure and Project Management)
- Singapore Management University
 - Bachelor of Business Management

Australia

- University of New South Wales
 - Bachelor of Construction and Property Management
- University of Melbourne
 - Bachelor of Design
- Queensland University of Technology
 - Bachelor of Business

United Kingdom

- University of Cambridge
 - Bachelor of Art in Land Economy
- University College London
 - Bachelor of Science Urban Planning and Real Estate
- University of Reading
 - Bachelor of Science in Real Estate
 - Bachelor of Science in Investment & Finance in Property
- Heriot-Watt University
 - Bachelor of Science in Urban Planning and Property Development



Maximus Ong
Class of 2021

Pursuing a Bachelor of Business Administration at SMU under the Ian R. Taylor Scholarship (Asia)



Lizanne Ng
Class of 2023

The Gold Medallist of her cohort is pursuing a Bachelor of Social Science at SMU

CAREER

Upon graduation, you can explore multiple careers across the real estate industry or with finance and investment firms in asset management, such as REITs. Exciting and rewarding careers include:

- Environment, Health and Safety Specialist
- Leasing Executive
- Marketing Executive
- Planning Executive
- Property Finance & Loans Officer
- Property Management Executive
- Real Estate Investment Executive
- Valuation Officer
- Fire Safety Manager
- Workplace Safety Officer



Chervel Tay
Class of 2009

Manager, Workspace Leasing (Business Park & Industrial) at Capitaland Investment



Jason Chan
Class of 2016

Senior Analyst at Knight Frank



Jadrien Sie
Class of 2022

Business Development Manager, (SME Banking) at Standard Chartered Bank (Singapore) Limited



MYNICEHOME ROADSHOW

In partnership with HDB, a group of REB students organised and executed the MyNiceHome roadshow, to share home financing tips with their peers.

“Participating in this roadshow allowed me to apply what I have learned in the course to help prospective home buyers understand how they can tap their CPF funds and HDB’s grants for their future home purchase.”

Zachary Willard Wee (in pink)
Third-year REB Student

Entry Requirements

Aggregate Type ELR2B2-B

To be eligible for consideration, candidates must have the following GCE ‘O’ Level examination (or equivalent) results.

Subject	‘O’ level Grade
English Language	1-6
Additional Mathematics/Mathematics	1-6
Any one of the 2nd group of Relevant Subjects for the ELR2B2-B Aggregate Type	1-6

Applicants must also fulfil the aggregate computation requirements for the ELR2B2-B Aggregate Type (English Language, 2 relevant subjects and 2 other best subjects) listed at www.np.edu.sg/docs/ELR2B2.pdf.

For students with other qualifications, please refer to the NP website for the entry requirements and admissions exercise period.

Candidates who have completed the Higher NITEC in Facility Management and issued with the Fire Safety Manager Certificate will be exempted from the Fire Safety Management module in this diploma.

CONTACT US

For the most up-to-date information on NP’s Diploma in Real Estate Business, visit www.np.edu.sg/reb

Our Graduates with That Something **XTRA**



GAINING THE WINNING EDGE

"My course at DE helped me expand my imagination and provided me with an all-rounded learning experience. I learnt many skills in technical, graphic and product design, which gave me an edge when I graduated."

POH YUN RU

Product Design & Innovation* graduate, Class of 2013

Yun Ru, an NUS Industrial Design graduate, is a designer at the NUS Design Incubation Centre and the recipient of the prestigious Lexus Design Award 2022 Grand Prix.

*Renamed the Diploma in Design



A GLOBAL PERSPECTIVE

"My time at DE has been truly transformative. Through overseas exchanges and design competitions, I gained a profound understanding of architecture and design, allowing me to see them from both global and personal perspectives."

SHERRY GOH

Sustainable Urban Design & Engineering* graduate, Class of 2016

Sherry holds a Master of Architecture and a Bachelor of Arts in Architecture from NUS. She is the Founder and Principal Designer at SHRY Interiors, and Design Consultant at Woods Bagot Singapore.

*Renamed the Diploma in Design



ALL-ROUNDED SCHOLAR

"HLFM provided me with a broad-based education, equipping me with knowledge and skills in security management, marketing, psychology, and consumer behaviour. This has enabled me to gain a deeper understanding of my clients' needs to develop holistic facility management solutions for them."

LINCOLN CHEN

Hotel & Leisure Facilities Management graduate, Class of 2018

A recipient of the BCA iBuild SG Undergraduate Scholarship, Lincoln graduated from NUS with a Bachelor of Science (Project Management). He has received awards such as the Lee Kuan Yew Gold Medal and Sally Meyer Medal.



TRANSFORMATIVE EXPERIENCES

"During my time at REB, I participated in an overseas internship at CapitaLand, Ascott China. The experience broadened my perspectives and challenged me to step out of my comfort zone. I'm also thankful to my passionate lecturers who made my learning journey in NP unforgettable."

DARRYL LEE

Real Estate Business graduate, Class of 2020

Darryl, a recipient of the Enterprise Singapore Global Executive Scholarship (Local), is pursuing a Bachelor of Science (Real Estate) at NUS.



ngee ann
polytechnic 

535 Clementi Road Singapore 599489

Admissions Hotline: 6463 1233

askNP@np.edu.sg

All information is correct at time of printing (Nov 2025)

Printed on environmentally friendly paper