

# SLICE *of* S-L

Prof William Oakes, Director, EPICS (Engineering Projects in Community Service) Program, and Professor of Engineering Education, Purdue University, and NP's consultant for Service-Learning (S-L) in STEM education, made his first visit to NP in March 2018.

Here's our "Report Card" from him...





Most of NP's current S-L experiences and programmes are advanced compared to global standards. NP is positioned to be a regional leader in S-L in STEM!



## OBSERVATIONS & RECOMMENDATIONS

S-L = ?



### THE ROLE OF S-L

- S-L is much more than just about nurturing big-hearted graduates. It is a very effective pedagogy for teaching academic content and professional skills.
- The community is an ideal partner for testing the relevance and suitability of projects before they are industry-ready.



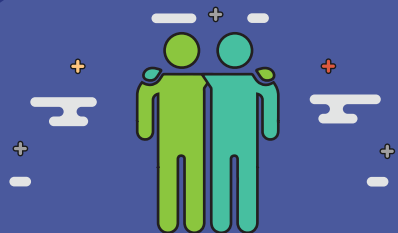
### IMPROVE POLICIES & PROCESSES

- At the institutional level, develop Liability Agreement for risk management purposes.
- Provide Letter of Agreement/MOU for key partners.
- Encourage sharing of spaces, facilities and capabilities across disciplines so that S-L can better benefit the community.



## SCAFFOLD & LEVERAGE S-L

- Scaffold modules where projects get passed on through multiple semesters.
- Encourage multidisciplinary projects.
- Incorporate S-L with innovation, entrepreneurship, design thinking and professional preparation.



## DEVELOP STAFF CAPACITY

Develop more faculty mentors and champions of S-L in each diploma area, to be involved in building staff capacity.

APRIL 2018



Office of  
Service-Learning  
Ngee Ann Polytechnic